

# Pegalith Project - Lithium

## Overview

The Pegalith claims cover a total of 1,409 hectares and are spread over 20 kilometres of complex geology. Located 25 KM north of Gatineau, Quebec.

The historic Mine Leduc is located approximately six kilometres southwest of the northern block of Pegalith claims and contains a lithium-bearing body (approximately 230 tonnes of 5.39% Li<sub>2</sub>O) hosted in pegmatitic materials (GM62505, Geotech Exploration, 2006, not 43-101 compliant).

Sections of the claims cover intrusive rocks that have pegmatite segments. These are prospective target areas for lithium mineralization.

## History - Producing Pegmatites (early 1900's)

Summary from 4 of 11 historical pegmatite mines on the Pegalith Project (Industrial Minerals)

### Mine Du Lac McLeod (Du Lac Harper)

- Minerals: Feldspar, Mica, Quartz, Garnet, Tourmaline.
- Production: 180 t of feldspar (1913-1914)
- Lithologies: A - PEGMATITE; B - GNEISS

### Mine Old Skead

- Minerals: Feldspar, Mica, Quartz
- Production: 2250 and 2700 t of feldspar (1923-1924)
- Lithologies: A - PEGMATITE; B - PARAGNEISS (GNEISS À SILLIMANITE-GRENAT)

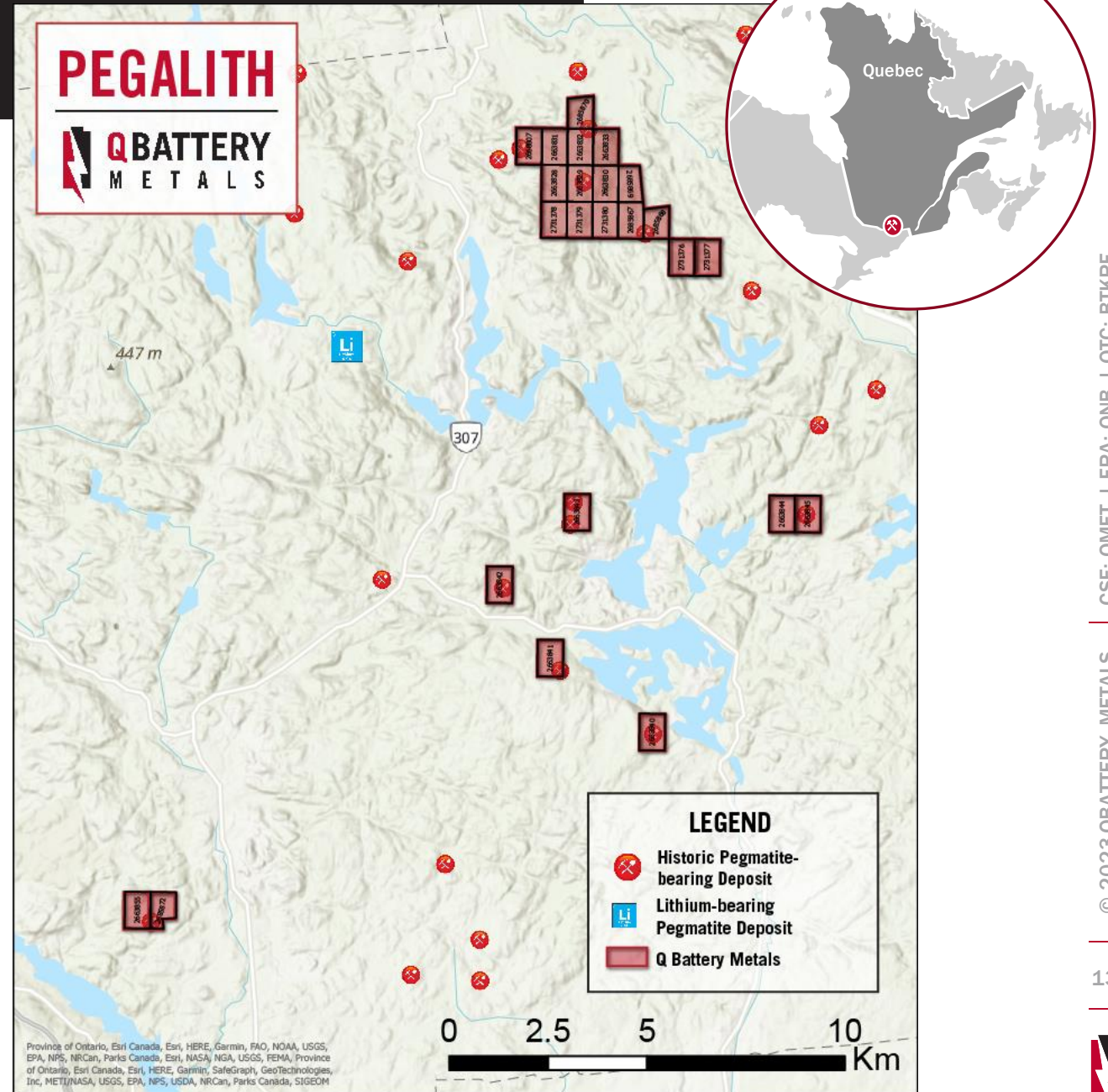
### Mine Poltimore-NE

- Minerals: Feldspar, Quartz, Mica
- Production: 270 t of feldspar (1926-1927)
- Lithologies: A - PEGMATITE ; B - GRANITE ; C - PARAGNEISS

### Mine Winning

- Minerals: Feldspar, Mica, Quartz, Hornblende, Sphene/Titanite
- Production: 90 t of s(1928-1932)
- Lithologies: A - PEGMATITE ; B - PARAGNEISS

Other historical past producing Mines include the Mine Evans Lou, Mine Templeton-Feldspath, Mine Briggs, Mine Murphy-Lac McGregor, Mine A. Wallingford, Mine Victoria (McLaurin, Mine Breckin, Mine Blackburn.





# Pegalith Project - Lithium

## Work Program

- ✓ Prospecting and sampling of the numerous mineral showings
- ✓ Detailed mapping and follow-up sampling over pegmatitic outcrops
- ✓ Mineralogical work to Identify lithium host minerals (lepidolite versus spodumene or petalite)
- ✓ Diamond drilling of best target areas

The Pegalith claims were staked to cover part of an extensive belt of granitic and gneissic rocks that host pegmatitic mineralogy. The claims cover or are in close proximity to 12 historic showings where small-scale mining was undertaken extracting coarse-grained feldspar, quartz and mica as industrial minerals. The geologic summary for these historic mines indicate that the main lithology is pegmatite within varied intrusive rocks. A first phase of exploration on the Pegalith will include locating and sampling the historic mines to test for lithium content.

The Pegalith claims are spread over 20 kilometres of complex geology. In particular, sections of the claims cover intrusive rocks that have pegmatite segments (as shown on Sigeom regional mapping). These are prospective target areas for lithium mineralization.

Q Battery Metals will initiate the first phase of exploration on the Pegalith claims in the spring and summer of 2023. The company is prepared to drill test the best targets that are derived from the exploration work. Drilling could be undertaken in late summer early fall.

