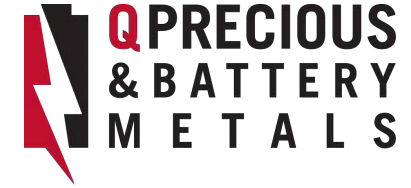


# La Corne South - Lithium, Copper - Zinc, VMS



## Overview

The La Corne South (“LCS”) Lithium Project comprises of 47 claim blocks totalling 2,484 hectares.

## Location

Located 23km north of Val d’Or, Quebec.

La Corne South is accessible year-round through major Highway 397 which runs through the claims, and additional industrial roads to various regions

## History

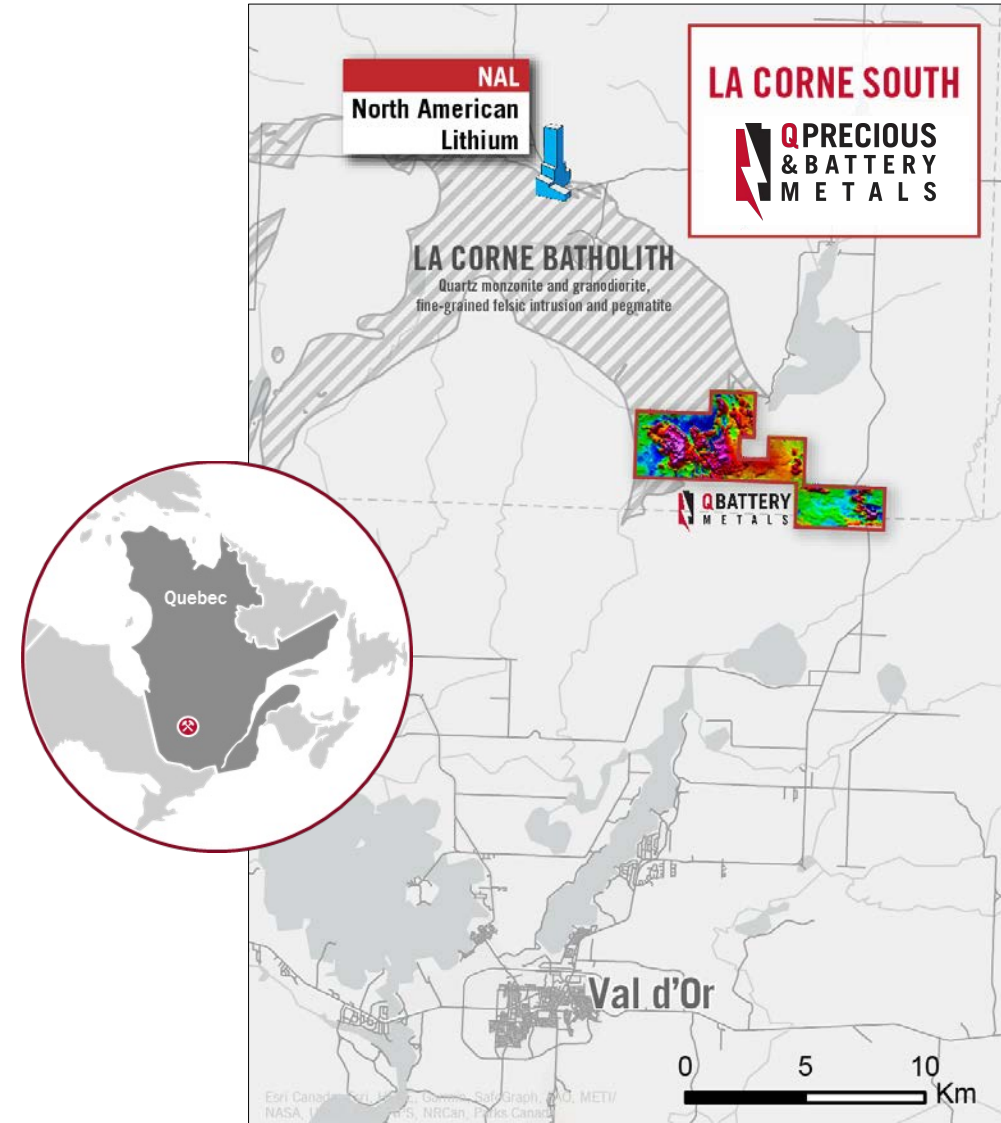
History of exploration includes trenching and diamond drilling of massive sulphide targets (Cu, Zn, Ag), and the discovery of the Boily-Berubé pegmatite

## Work Completed By Q Precious & Battery Metals

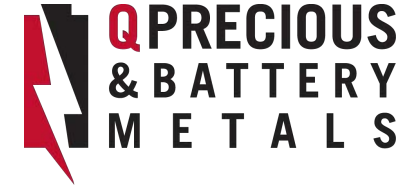
Q Precious & Battery Metals has completed the following since 2021;

- Airbourne Magnetic Survey,
- Ground-based deep penetrating, electromagnetic survey
- Bedrock sampling.

Several target areas including the potential for multi-element VMS and lithium-bearing pegmatite have been identified by these surveys.



# La Corne South - Lithium, Copper - Zinc, VMS



## Lithium Regional Setting

La Corne South is located in one of the highly sought after and active lithium exploration Regions of Quebec.

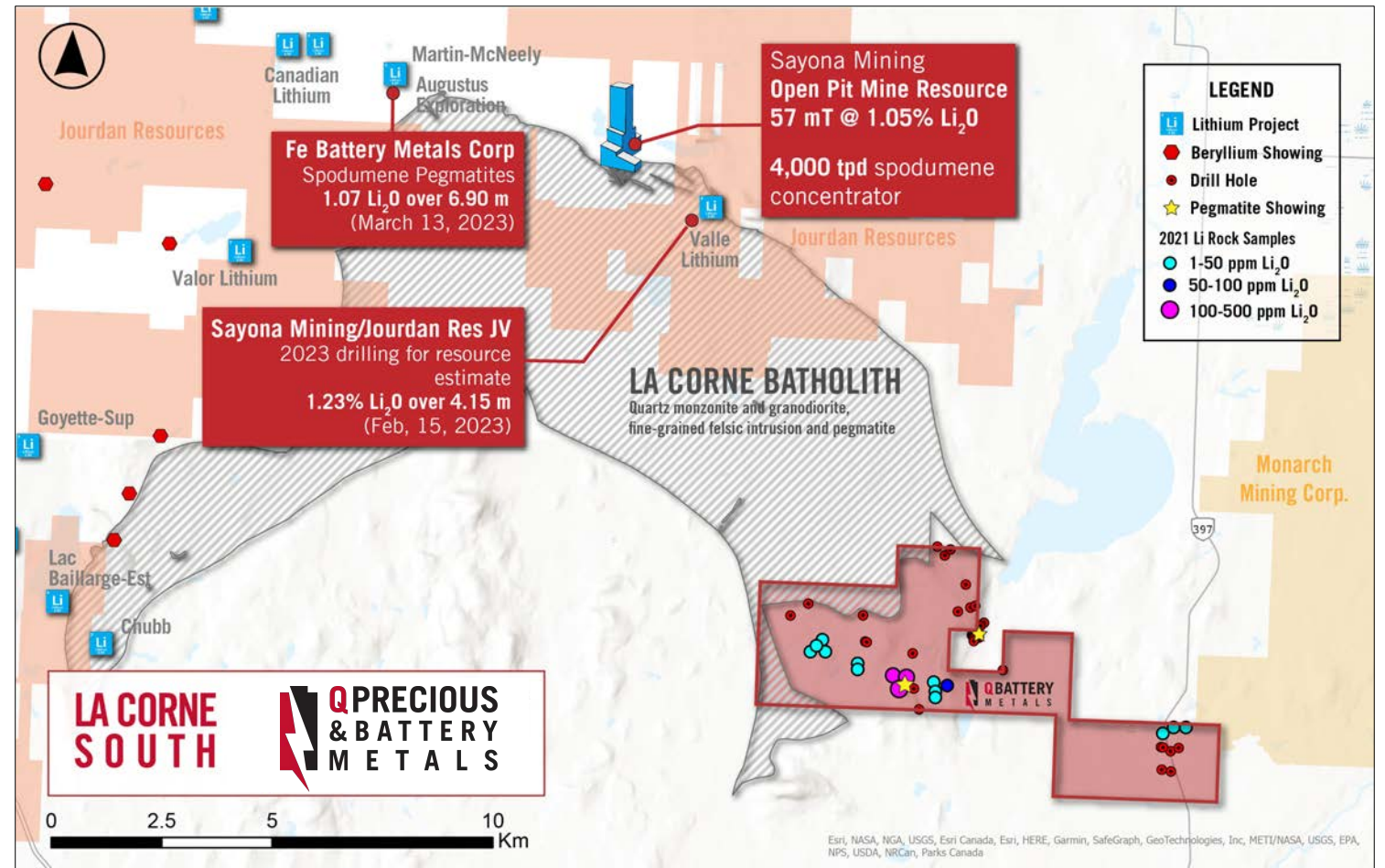
The La Corne Batholith is a know LCT granite with associated lithium-bearing pegmatites

The Quebec database indicates 14 lithium projects associated with the margins of the La Corne Batholith. Sections of the batholith are pegmatitic which host the lithium.

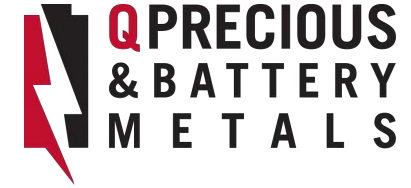
Sayona's North American lithium deposit is located 10 kilometres northwest of the La Corne South claims.

The North American Lithium project is a with listed Proven and Probable Ore Reserves estimated at 29.2 million tonnes grading 0.96%, and a resource of 57 mT @ 1.05% Li<sub>2</sub>O

The northern part of the La Corne South claims cover the margin of the La Corne Batholith which is the zone that has been shown to host lithium.



# La Corne South - Lithium, Copper - Zinc, VMS



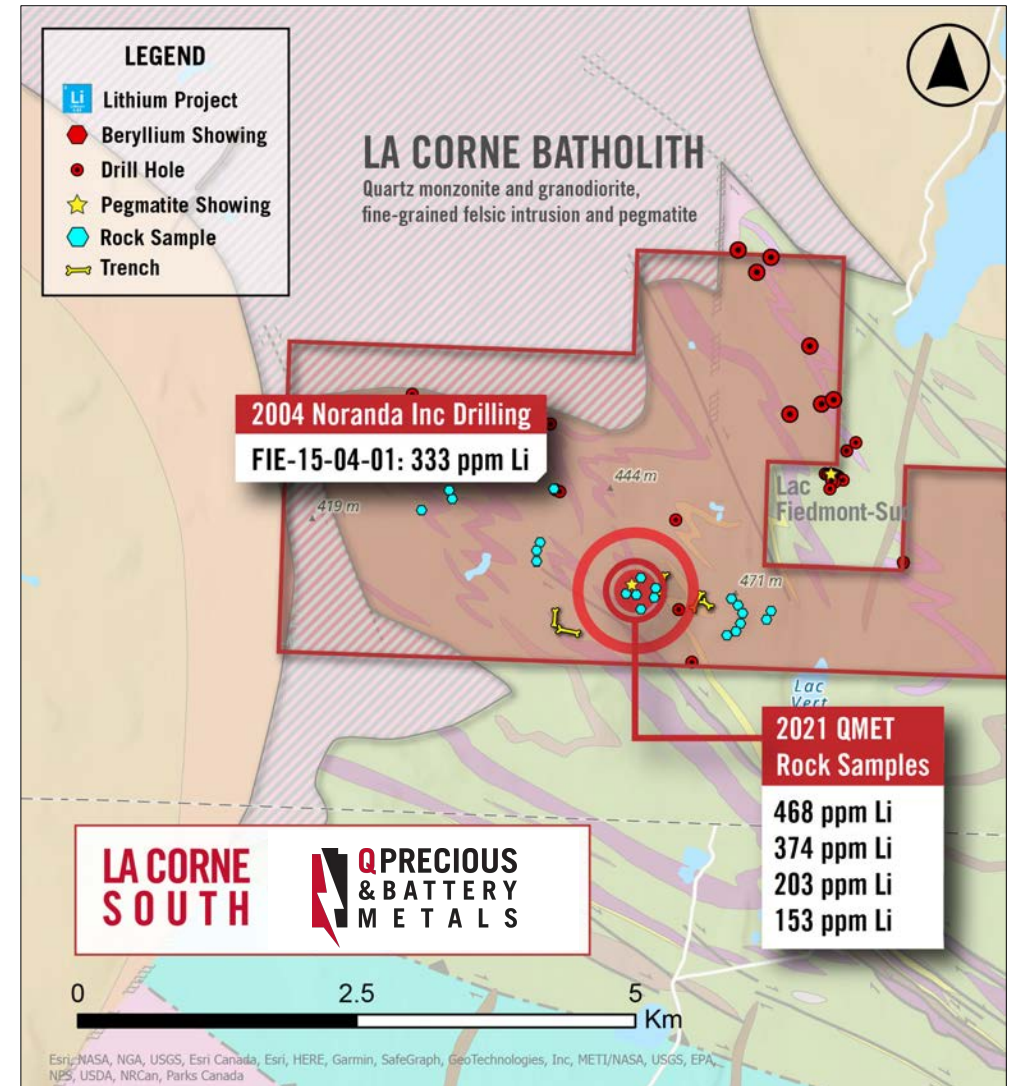
## Lithium on La Corne South

Historic work on the La Corne South includes diamond drilling by a number of companies. One hole completed in 2004 by Falconbridge-Noranda intersected up to 333 ppm Li with several intercepts over 100 ppm

Work conducted by Q Battery in 2021 included rock sampling to test for multiple elements. Results obtained include a number of samples that returned > 100 ppm lithium, including 468 ppm Li.

The Boily Berubé mineral showing is a pegmatite exposure that has yet to be sampled for lithium and contains molybdenite and bismithinite

The recently completed detailed magnetics survey over the whole of the La Corne South property provides exploration targeting for pegmatite bodies



# La Corne South - Lithium, Copper - Zinc, VMS



## VMS Regional Setting

The La Corne South claims are situated in greenstone volcanic basalt and andesite. Approximately 10 km north of the La Corne, a cluster of massive sulphide deposits are documented in the Quebec showings database. This includes the Abgam, Belfort, Baralee', and Vendrome Number 1 showing and worked deposits, typically reporting significant values for zinc, silver, copper and gold.

VMS showings are located in close proximity to the La Corne, including the Swanson mineral showing located 7 km northeast of the La Corne S. At the Swanson, values up to 103 g/t Au and 45% Zn are reported in selected samples. AUR Resources (1987) took a rock cut sample that returned over 5.79 m of 4.8% Zn and 3.7 g/t Au (GM 34828, GM 48760)

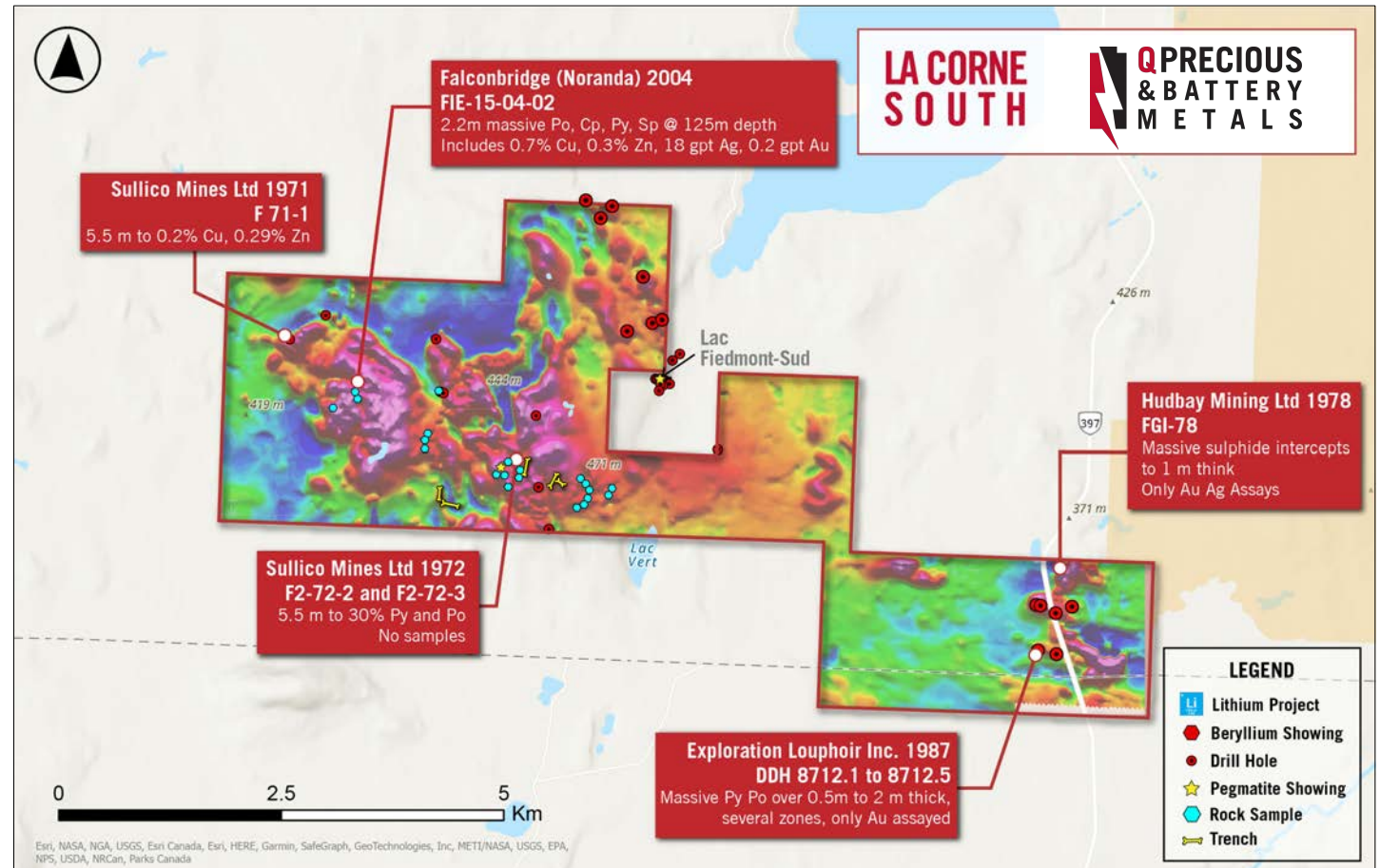
## Historic Work on La Corne South - VMS

Historic trenching has uncovered a series of massive sulphide bodies on the property that were sampled primarily for gold content. These are to be further sampled for multiple elements

Diamond drilling in 1971, 1972, 1978, 1987, and 2004 by Exploration Louphoir, Sullico Mines, HudBay Mining, and Noranda Inc intercepted massive sulphide bodies, only some of which were assayed for base metals

Noranda drill hole FIE-04-02 intercepted 2.2m of massive sulphide at 125m depth, assaying 0.7% Cu, 18 gpt Ag, 0.2 gpt Au and 0.3% Zn

Sullico Mines Ltd 1971 hole F 71-1 intercepted 5.5 m of massive sulphide returning 0.2% Cu and 0.29% Zn



# La Corne South - Lithium & VMS



## Work Program

- ✓ Prospecting, mapping, rock sampling
- ✓ Geophysical ground surveys (resistivity)
- ✓ Continued evaluation of magnetic survey data for targeting Lithium and VMS
- ✓ Soil sampling over target features
- ✓ Diamond drilling best targets

- Q Precious & Battery Metals is prepared to drill test the best targets that are derived from the 2023 exploration work in La Corne South.
- The primary targeting will be for lithium with secondary targeting for multi-element VMS.
- Drilling could be undertaken in the fall or early winter 2023.

2021 rock sampling by Q Battery returned elevated lithium values while exploring for massive sulphide mineralization (the pegmatite rocks are yet to be sampled)

| SampleID | Lithology Code | Lithology Summary          | UTM_E  | UTM_N   | SampType | Li  |
|----------|----------------|----------------------------|--------|---------|----------|-----|
| B0116756 | I4 (AM) GG     | Ultramafic, coarse grained | 298678 | 5353828 | Grab     | 468 |
| B0116786 | V3B            | Basalt                     | 298676 | 5353877 | Grab     | 374 |
| B0116758 | I3A GM         | Gabbro                     | 298679 | 5353848 | Grab     | 203 |
| B0116769 | I3A PO AM      | Gabbro with pyrrhotite     | 298893 | 5353864 | Grab     | 153 |
| B0116771 | V3B            | Basalt                     | 298743 | 5353654 | Grab     | 103 |
| B0116763 | V3B            | Basalt                     | 298682 | 5353906 | Grab     | 94  |

